



MiataTalk

May 2021 Volume 32, Issue 5

Newsletter for the Lone Star Miata Club

LSMiata.org

<http://internetcarclubs.com/Clubs/LoneStarMiataClub.aspx>

Facebook: Lone Star Miata Club

Next meeting

May 13

Spring Creek Barbecue
315 W. State Highway 114
Grapevine TX 76051

Zoom link also available

**SPRING-CREEK
BARBEQUE**

Don't forget, members can look up contact information for other LSMC members on the internetcarclubs.com website. Click on the "Club Members Only" button to get to the directory.

Lone Star Miata Club Officers for 2021 (LSMCofficers@gmail.com)

President

Sean Bryan

President@LSMiata.org

Secretary

Craig Woolheater

Secretary@LSMiata.org

Membership

Doug Dodgen

Membership@LSMiata.org

Vice President

Richard Rogers

VP@LSMiata.org

Treasurer

Mary Wharton

Newsletter

Julia Kuhn

Webmaster Doug Dodgen

In case you missed it — April

4/8/21, held jointly at Spring Creek Barbecue in Grapevine and via Zoom, President Sean Bryan, presiding

Guests/New Members introduced themselves. Sean listed birthdays and club anniversaries.

Door prizes were awarded. 50/50 raffle collected \$90, \$45 to winner.

Texas Miata Challenge

- Shirts and pins for the 2020 challenge have arrived. Contact Bruce Gibson to arrange to get yours.
- The 2021 Texas Miata Challenge has an ice cream theme. You can visit the sites on your own or as part of a club activity. Final deadline to complete your runs and have pics to Bruce Gibson is Oct. 30, 2021. Email is brucegibson5@gmail.com, or you can check in on the website and upload your pictures. Richard Rogers demonstrated how to register your pictures on the club website for the 2020 challenge. Instructions included in the newsletter will also work for 2021 challenge.

Old Business/Events:

- Dues are due! See the membership forms for returning and new members in the newsletter. (Editor's note: You can also renew online by logging in to your profile on the website. There is a small additional fee to cover the fee PayPal charges the club for using credit cards.)
- Donation button online for North Texas Food Bank
- March 20: Meridian run, led by Sean Bryan. Included run to a challenge stop in Waco after the official run.
- March 25-27, 2021: March Miata Madness in Jefferson, organized by Craig Woolheater. 40+ cars participated. Craig plans to hold the event again next year.
- Doug Dodgen has resumed ice cream socials.
- Mid cities meetups resumed in April, organized by Craig Woolheater.
- April 3: Dyno day in Marion outside New Braunfels, led by Craig Woolheater.

New business/Events:

- Sean Bryan sent out bylaws for comment. They were presented and approved by the membership at the April meeting. They will be posted to the website.
- April 10: Richard Rogers plans to lead a run to Lubbock and San Angelo which will include 2 challenge stops, with overnight in Lubbock.
- May: Day run to challenge site in Sulpher Springs, led by Richard Rogers.
- Regency Bridge run April or May.
- May 8: Club picnic at the Pavilion in Parr Park, Grapevine. Please RSVP so the club can get an accurate head count for food.
- Late May: Steak Cookoff in Hico has been canceled. Mary is planning an alternate run.
- October: sweet dough pie festival is still possible. State Fair day is possible.
- Roundup 2021 plans are on hold.
- Richard always has club merchandise for sale: door magnets, coffee mugs, pins.

Next meeting May 13.

Events & Items of Interest

Don't forget the LSMC website

<http://www.internetcarclubs.com/Clubs/LoneStarMiataClub.aspx>

Doug Dodgen maintains our website to make it the best place to check information about the club. He has added the yearly calendar so you can plan for upcoming rides. Keep in mind that dates are subject to change. Members can log in and modify their contact information as well as add a profile picture. If you have questions about editing your information, please contact Doug. The main page of the Lone Star Miata Club part of the website contains a link to our www.LSMiata.org blog site where links to newsletters are published.

Check us out at <http://www.internetcarclubs.com/Clubs/LoneStarMiataClub.aspx>!

If you have not renewed your membership for 2020, please do so ASAP. You will be removed from the club roster and from Evites after March 31. Dues are \$40 for couples who both want to join, and \$30 for singles. Your dues go toward door prizes, club insurance, and supplementing costs for annual events such as the Christmas party and picnic.

From your editor

When you lead a drive, please print participant waivers from <http://lsmiata.org/events/>. It's a good idea to have maps with your phone number printed on them for a trip. Also be sure to bookmark the blog page <http://lsmiata.org> and the website at <http://www.internetcarclubs.com/Clubs/LoneStarMiataClub.aspx> to get all the latest information about us.

A note about Evites...

Evites now go to all emails on file. One person responding can change the number of attendees to an event if both people in a couple don't want to respond. ALL members should be getting emails generated by the website, and all members can access the Evites from the website event listing and, in most cases, from Facebook (members only events are not publicized on Facebook).

If you are not getting emails generated from the website, please see Doug Dodgen to verify your membership information.

Evites always contain the phone number of the person leading the drive/event. If you have questions or are running late, please contact that person.



2021 Texas Miata Ice Cream Challenge



Sponsored by Lone Star Miata Club and Classic Mazda

Drive to each of the designated points in Texas.

Take a picture of you, your Miata, and the specified destination.

If both driver and co-pilot are participating, both can appear in the same picture or a picture of each person, your Miata, and the destination. Group pictures are also allowed as long the picture clearly shows all participants and all their cars.

In addition to 10 Ice Cream locations, participants must include a picture of you & your Miata at your favorite Dairy Queen location. After all Dairy Queen is Texas.

Entries with the 11 destinations (including your favorite Dairy Queen) will receive a specially designed Pin & T-shirt. Shirts and Pins will be presented Texas Miata Roundup or mailed after the Roundup.

Pictures can be submitted electronically, or prints that are no larger than 4"x6" on photo quality paper. Mail or turn entries in to Bruce Gibson by October 30, 2021.

Sites are shown on Next Pages

2021 Texas Miata **Ice Cream** Challenge

Name _____ Email _____

Address _____

City _____ Zip _____

Questions :

Phone _____

Email: _____

Bruce Gibson
 1020 Mesa Ct.
 Shady Shores, TX 76208
 (940) 999-3334
 brucegibson5@gmail.com

Texas Miata Challenge - 2021

ICE CREAM Y'ALL



(1) **The Magic Scoop**

111 Gilmer Street, Sulphur Springs, TX

Founded in 2016. Owners claim it's the best homemade ice cream in town. Also has baked cookies, brownies, shakes, floats and much more. Visit the see through restroom on the square while you're there.



(2) **Holly Hop Ice Cream**

3404 34th St. Lubbock, TX

Fun, nostalgic place with delicious sweet treats. Lots of flavors to choose from and the place is decorated with Buddy Holly era décor. Enjoy a Root Beer float made the old fashion way.



(3) **The Latest Scoop**

37 W Concho Ave., San Angelo, TX

The family ice cream legacy started in World War I when the grandfather started making ice cream. It's been since passed on to the grandson. All the ice cream and waffle cones are made on site.



(4) **Amy's Ice Cream**

1012 W. 6th Street, Austin, TX

Established in 1984 in Austin. Home of the World Famous Mexican Vanilla Ice Cream. Take a stroll down the famous 6th street & see Austin's quirky ways.



(5) **Henry's Homemade Ice Cream**

3100 Independence Pkwy, Plano, TX

Enjoy your favorite Ice Cream or "build your dream ice cream sundae" They make their own waffle cones for tasty, old fashioned ice cream.





Texas Miata Ice Cream Challenge

Page 2

- (6) **Berry Top Creamery**
2370 Nall St, Ste B, Port Neches, TX

Locals claim this is the best ice cream around. And so many flavors to choose from. They also carry sugar free choices.



- (7) **Heritage Creamery**
1125 S 8th Street, Waco, TX

So many unique flavors to choose from. Cool place and great environment. Try out their ice cream cookie sandwich or their brown butter pecan in a crispy homemade waffle cone.



- (8) **Scoopy's Ice Cream Treats**
13313 S. Padre Island Dr. Corpus Christi

Great ice cream on the water. Stop at Snoopys Seafood next door and then head over to Scoopy's for your ice cream treat in a delicious waffle cone.



- (9) **La'Bonita Michoacana**
1418 South St, Nacogdoches

Homemade ice cream along with a selection of hispanic desserts if you're looking for a change. Take the time to visit historic downtown. It's worth the visit.

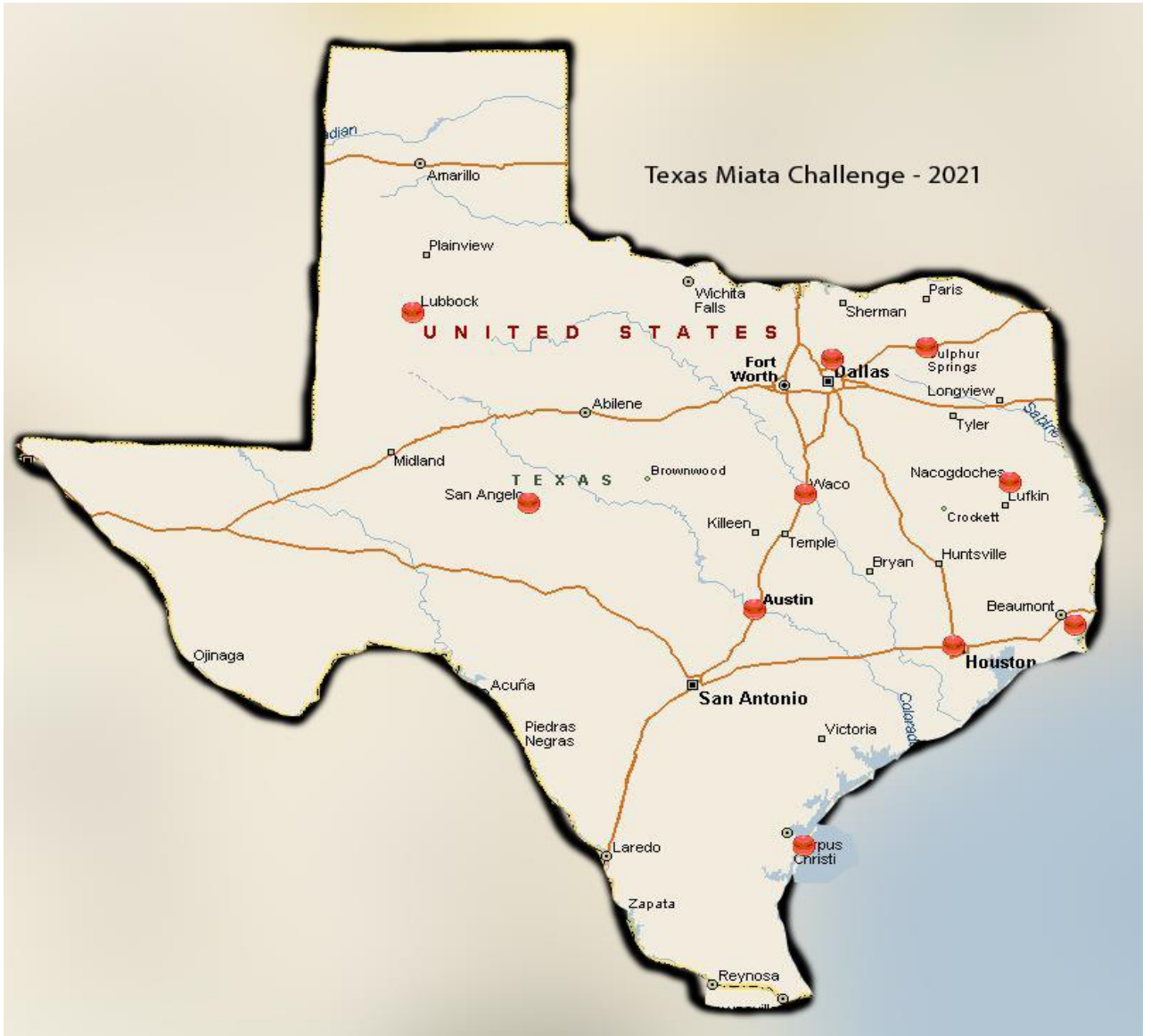


- (10) **Fat Cat Creamery**
1901 N Shepherd Drive, Houston, TX

Delicious Ice Cream, generous servings. Listed in top 10 places to eat ice cream. So many choices from your standard flavors to Mexican Vanilla to Vegan ice cream. Something for everyone.



Map outlining Challenge Spots



2020 TEXAS MIATA CHALLENGE PRESENTATION

Open Browser

Two web sites: ismiaata.org
Click on website:
<http://internetcardclubs.com/clubs/LoneStarMiataClub.aspx>

Or go directly to:

Internet Car Clubs site (set Bookmark)

Note that at the "ismiaata.org" website:

Click on Newsletter "202001" to see good write of Challenge sites.

At Internet Car Clubs site; See Events:

First Event is "Challenge"

Click on "Select"

Click on "Additional Information"

See: [2020 Texas Miata Challenge Page](#)

(Good idea to bookmark page)

Can click on "Official Entry Form"

"Map"

Login to register and Check In

"Login" Button at Top Right Corner

Enter email and password

After Login:

Click on: "Sign Up" to register

Click on: "Show Details" (to check in and upload Photo and enter comments)

Note: Look for location in Google Maps to see where each challenge site is located.

Click on: "Check In"

Click on: "Choose File" to upload Photo file

Click on: "Upload" to do the upload

Enter optional comment and Click on:

"Upload Comment" to save the comment

Note that your own comment can be edited

Photo Image: To see large image of Photo:

Right Click on image and select: "Open image in new tab"

Do the same for each Challenge Location and Enjoy exploring the
GHOSTS & LEGENDS of Texas



The Miata Reunion website is LIVE!

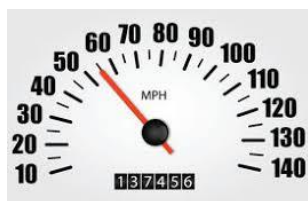
We're excited to announce that the Miata Reunion 2021 website has just been published. There's something there for every flavor of Miata enthusiast, covering all aspects of our fun little cars.

www.miatareunion.com

We hope you like the attached logo, because every person who registers for General Admission or Track Days will receive one of these in a high quality sticker when they check in at the event. We've also commissioned a special limited edition run of these in pins and key chains, which will be available for purchase with other event merchandise at the track.

See you in October!

The Miata Reunion Team



Tick Tock Rally

May 1, 2021



Starting and ending in Aubrey, Texas!!

You're invited to the Tick Tock Rally, an SCCA Regional Time-Speed-Distance (TSD) tour rally over paved backroads of Denton and Cooke counties, **starting and finishing in Aubrey, Texas**. A precision driving event at fun speeds to (re)introduce TSD rallying to the Texas Region. This will be a Monte Carlo style rally. **No prior road rally experience required**. Course following is easy with a mileage on every instruction and a sign reference, if there is one. We score you on how close to the perfect time you arrive at checkpoint locations along the route. No calculations involved. We tell you where every control is and the perfect time to arrive there. All you have to do is arrive at that time. Get one point for each second early or late; low score wins.

It is not a speed or racing contest. You will be timed at the checkpoints by means of the Richta GPS smart phone app. Scores are automatically reported to the Rallymaster. No score sheet to fill out. We will send you information on it after you pre-register. Also, we plan to conduct a **Rally School** via Zoom (currently scheduled for **April 25th**) to help prepare for the rally. It'll include a **short test rally** that you can run to see how the app works before rally day. We encourage you to attend the School.

In light of the current COVID-19 situation, every attempt will be made to minimize the risks of exposure to the virus. You should not have to get out of your car. All of the registration materials and rally materials needed for the event will be available online or sent to you via email, and can be completed and returned ahead of the event or, if applicable, you can print them and bring them with you. **Ultimately, it is your responsibility to assess the risk to you, comply with applicable COVID-19 guidelines and make the decision on whether or not to participate.**

- Starting Place: HL Brockett Elementary School front parking lot, 900 Chestnut St, Aubrey, TX 76227.
- Complete registration and orientation: 10:30 am to 11:45 am on Rally Day
- Cars leave the start: 12:00 pm plus your car number
- Length: approx. 87 miles (~3 ½ hours)
- Finish: same location as starting place
- Rally type: TSD Tour. A smart phone, as well as a clipboard and pencil are all you need.
- Route: paved roads in Denton and Cooke counties
- Vehicles: Sports Cars, Family Cars, Classic Cars, Antiques, anything with 4 wheels that's street legal is OK in this Rally. Note: speed is **not** a factor.
- At least two people (a driver and a navigator) are required in each car; contact rally@texasscca.org if you have a minor child (<18) in the car, as a form will need to be signed
- Three classes: First-timer (neither crew-member has run a rally before), Novice (2 rally trophies or less), General, and Master (this is an optional class: no trophies).
- **At least one SCCA Member required in each car**, either regular/annual Member or Weekend Member; if not currently a Member, you can become a Weekend Member during online pre-registration
- Rally entry fee: regular SCCA Members \$25.00; Weekend Members \$35 (includes membership fee).

Registrants will be emailed the rally rules well ahead of the event. All entrants must pre-register – **no same-day registration allowed** – and you are advised to pre-register as early as possible. The Rally Committee reserves the right to limit entries. For additional details and to **pre-register**, go to MotorsportReg.com: <http://msreg.com/TTR21msr>, or access the QR code:



Texas Region SCCA (www.texasscca.org) is affiliated with the Sports Car Club of America (www.scca.org). With nearly 65,000 members, and with Regions all over the US, the club offers car related activities in a broad range of automotive events.

Classifieds:



FOR SALE!

DON'T FORGET TO SEE OUR VICE PRESIDENT, RICHARD ROGERS, FOR CLUB LOGO ITEMS!

Items are excellent quality and only require a very reasonable donation.

Richard orders the magnets in batches. They are great to show off when we drive as a group. Magnets are \$15 for a set of 2. If you don't want to wait for the next batch, be sure to purchase them when he has them on hand. Bruce also has round magnets for sale.

Pins are still \$2 each or 10 for \$15. Great for trading with other groups!



Richard can also order coffee mugs and T-shirts with the club logo. The logo can be positioned anywhere on the shirt, in small or large size.

Mugs are available for about \$12, and shirts are available for around \$10-15. Contact Richard for details.



Embroidery

Embroidery is available at Panda Embroidery in Grapevine and at Embroidery Plus in Grapevine Mills mall. The club logo is on file at both stores, so you can take any item you would like to have embroidered.



LSMC Logo Stuff

Contact our Vice President, Richard Rogers at VP@lsmiata.org for LSMC Logo merchandise being offered through the club. You also can buy merchandise at Panda Embroidery, 351 East Huggins, Grapevine, TX 76051 (817-488-4151). Panda can embroider items in a thread color of your choice including one that matches your Miata!

Newsletter Submissions & Distribution

Ads, announcements, articles, trip reports and other contributions to the newsletter are **encouraged**. Email submissions to Newsletter@lsmiata.org. Attachments may be in .pdf, .txt, Word or WordPerfect format. Pictures may be in any of the usual formats such as .gif, .jpg, png, etc. If I have any problems with document or picture format, I will contact you. Don't worry about spelling, grammar, artwork, layout, etc. I'm just pleased to receive input and will take care of the editing and cosmetics! Also, if you find something interesting online, please send me the link. Input is welcome anytime, but must be received prior to the publishing deadline (usually the first of the month) to be in the next issue.

NOTE: If you want the newsletter sent to more than one email address, your secondary driver, or anyone else, please send your name (so I know you're a member) and the email address(es) to Newsletter@lsmiata.org.

ANOTHER NOTE: Member in Good Standing (you've paid your dues) may submit ad copy or info on their business. Does **not** have to be a Miata- or car-related business, but it must be **your** business. Others may advertise, too, for a fee. Contact the President@lsmiata.org for details.

Two-Way Radios

For more fun on drives, if you don't have a two-way radio, get one. Without one, you miss out on a lot of chat and decision making as to stops, etc. Most importantly, should you get separated from the group or have car trouble; it makes it much easier for us to find you and assist you! LSMC uses GMRS/FRS radios for better range and reception. An operating license is not required when used in the FRS range.

Stuff for Sale and Announcements

LSMC permits all members in good standing to place a free ad or event announcement in the LSMC Newsletter. The item should relate to the Miata or Club activities. This includes activities hosted by other clubs, Car-related events of general interest are also welcome. Contact the editor at Newsletter@lsmiata.org to place an ad or announcement.

Change of Address & Member Info

Be sure to keep your contact information and particularly your email address up-to-date; you don't want to miss anything! Submit your email address, snail mail address, new car info and any other contact information changes to the Membership Officer at Membership@lsmiata.org. A form also is available on our website. Just click 'Membership' and select the text 'update' to update your information.

Blogsite and Facebook

Check out our **blogsite** at lsmiata.org for various information. For up-to-the-minute events information, member input and other stuff, visit our **Facebook** page at [Lone Star Miata Group](https://www.facebook.com/LoneStarMiataGroup). You may also consult the newsletter, which is published more or less monthly.

LONE STAR MIATA CLUB

MEMBERSHIP RENEWAL FORM

Time to renew your membership! Annual dues are \$30 for singles, \$40 for couples. After March 31, 2021, add \$5 late fee. If your dues have not been paid by the April meeting, your name and number will be dropped from the membership roll. Make checks payable to **Lone Star Miata Club**. Please **complete** this form, **even if no information has changed**, and return it along with your check to:

Doug Dodgen

Lone Star Miata Club

508 Chaffee Drive
Arlington TX 76006

Please provide the following information. To avoid errors, **please print legibly.**

PRIMARY DRIVER: _____ Birth Date ____ / ____

SECONDARY DRIVER: _____ Birth Date ____ / ____

ADDRESS: _____

(apt #, number, street) _____
(city) (ST) (zip)

Landline: (____) _____ Driver Cell: (____) _____

Driver email:

Copilot email:

Club notices and correspondence will be sent to all email addresses listed.

(Please advise if you have not been receiving the Newsletter and/or emails.)

YOUR MIATA'S NAME (if it has one): _____

COLOR: _____ YEAR: _____

ADDITIONAL MIATAS: _____

(Color) (Year) (Name)

Please list additional cars and any additional information on the back of this form.

THANK YOU! ~ Your Membership Officer

----- **below for club use only** -----

DATE	AMOUNT	CHECK	CHK. TO	D-BASE
RENEWED	PAID	NUMBER	TREAS.	UPDATED

LONE STAR MIATA CLUB

NEW MEMBER FORM

Please provide the following information. To avoid errors, *please print legibly.*

PRIMARY DRIVER: _____ Birth Date ____ / ____

SECONDARY DRIVER: _____ Birth Date ____ / ____

ADDRESS: _____
(apt #, number, street)

(city) (ST) (zip)

HOME: (____) _____ WORK: (____) _____ CELL: (____) _____

EMAIL ADDRESS #1: _____

EMAIL ADDRESS #2: _____

Club notices and correspondence will be sent to all email addresses listed.

YOUR MIATA'S NAME (if it has one): _____

COLOR: _____ YEAR: _____

ADDITIONAL MIATAS: _____
(Color) (Year) (Name)

Please list additional cars and any other information on the back of this form.

Did a member of this club tell you about our club and if so, who? _____

Annual membership fee is \$40 per year for couples, \$30 for singles . If you want to purchase a club nametag, add \$10 per nametag (price is higher if purchased later). Dues for members joining after June 30th are prorated. Please make checks payable to: Lone Star Miata Club

Return this form and your check to:

Doug Dodgen
Lone Star Miata Club
508 Chaffee Drive
Arlington TX 76006

For more information, please contact:
Doug Dodgen
Membership Chairman
817-475-7004
Membership@lsmiata.org

----- *below for club use only* -----

DATE	AMOUNT	CHECK	CHK. TO	D-BASE
RENEWED	PAID	NUMBER	TREAS.	UPDATED
_____	_____	_____	_____	_____