



[www.lsmiata.org](http://www.lsmiata.org) Volume 28, Issue 4  
 Facebook: Lone Star Miata Group

# May meeting

*Welcome to*



Monthly meeting  
 Thursday, May 11, 6:30 pm  
 In Grapevine!

2001 N. Hwy 121  
 Grapevine TX

Guests and new members welcome

Don't forget, members can look up contact information for other LSMC members on the internetcarclubs.com website. Click on the "Club Members Only" button to get to the directory.

## Lone Star Miata Club Officers for 2017

**President**  
 Bruce Gibson  
 President@LSMiata.org

**Vice President**  
 Richard Rogers  
 VP@LSMiata.org

**Secretary**  
 Julia Kuhn

**Treasurer**  
 Mary Wharton

**Webmaster**  
 Doug Dodgen

**Membership**  
 Doug Dodgen  
 Membership@LSMiata.org

**Communications**  
 Julia Kuhn  
 Newsletter@LSMiata.org

# President's meeting notes ... (April)

April 13, 2017, Fuddruckers McKinney

Happy Tax Month Everyone!!

Welcome new members Gloria Trosper, Eric Jessup, John Davis, Lisa & Dan Koen, Will Harry, and David Beene, who is rejoining after a number of years away.

Congratulations to Richard Rogers for being a LSMC member for 11 years now.

Below are the confirmed dates of 2017 upcoming events:

- 4/21: Sun, Sea, Sandcastles and Sandwiches! Willow Creek & Rockport Challenge Sites – Doug Dodgen
- 4/29: Bankhead Hwy Run – John Nagely
- 5/6: Annual Picnic – Parr Park Pavilion, 11 am to 3 pm. Club to supply barbeque. Bring a dish to pass (you can add a note on the evite stating what you are bringing). Electricity is available. Bring games to play.
- 5/13: North Texas Mustang Club Car Show - Lone Star Miata Club is the visiting car club at the Cracker Barrel in Lewisville. Registration is \$15. Show is from 4 to 6 pm with awards at 7:30 pm.
- 5/26-28 (Memorial Day Weekend): Kemah-NASA-Seabrook Challenge Site – Howard & Betty Banfield
- 5/27: SCCA Tulip Time Rally – Sasha Lanz
- 6/3: Loose Wheels Run – Bruce & Ruth Gibson
- 6/10: Ancient Ovens Run – Gerry & Suzanne Sauls. See Evite as you must pay in advance.
- 7/15: Painted Churches – Glen & Kim Christopher
- 8/18-22: Great American Eclipse, Cape Girardeau MO -- Brian Knopp
- 10/8: Miatas at the Texas State Fair – Richard Rogers
- 10/20-22: Cajun Food/Sweet Dough Pie Festival, Lafayette, LA – Dave & Mary Warton
- 11/3-5: Texas Miata Roundup hosted by Tejas Miata Club. HOTEL INFO: Holiday Inn Express Buda. Initial block of 25 rooms is reserved at \$109 a night. Mention MIATA ROUND UP upon calling 512-295-8040.  
[https://www.facebook.com/profile.php?id=280222575740915&ref=br\\_rs](https://www.facebook.com/profile.php?id=280222575740915&ref=br_rs)

Planned but not confirmed

- 6/17: Challenge Sites Wichita Falls & Lubbock (& Midland?)
- 7/1: Celina Winery & Big Slicks Cafe
- 7/4: 4th of July Parade – John Nagely
- 10/21: Russellville Roadsters
- More information, including motels can be found at:  
<http://internetcarclubs.com/Clubs/LoneStarMiataClub.aspx>.

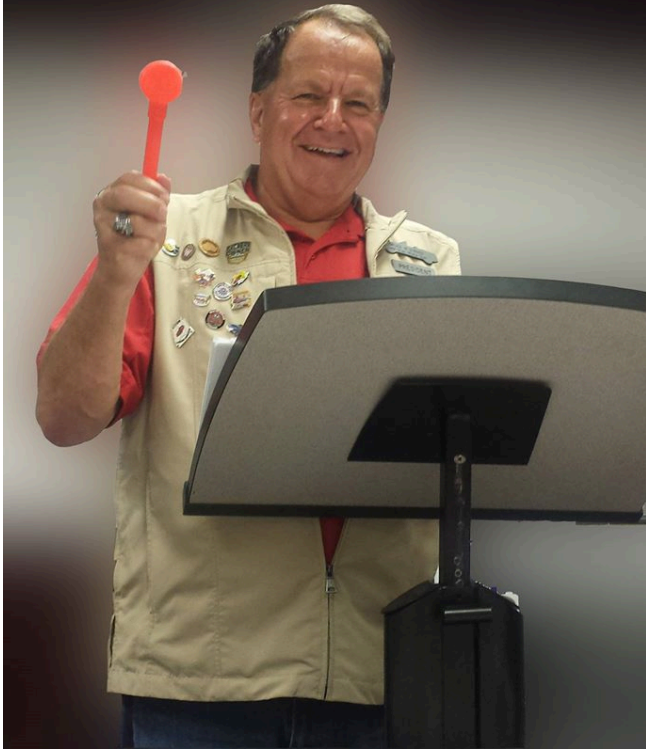
I have new 8" round LSMC car magnets. The 8" will cost \$17/pair. You can pick them up at the monthly club meeting or one of the club events.

The 2017 Texas Miata Challenge locations have been posted on Internet car clubs website and in every newsletter. We get to eat our way around Texas as all of the locations are restaurants that have been listed in the Top 50 Hamburgers in Texas Monthly magazine. At least 2 couples have completed the 2017 challenge already.

Our next Club Meeting is at Fuddruckers Grapevine on Thursday, May 11 at 6:30 PM.

Bruce Gibson  
President LSMC

# Time to Upgrade the Gavel



It was time to upgrade the gavel used at the The Lone Star Miata Club meetings. I made this gavel on my lathe, wood burned the club's name and logo to personalize it, and gave it to the club at the March meeting. I hope you all like it. It was a fun project and was also the first time making a gavel.







# 2017 Texas Miata Challenge



## Sponsored by the Lone Star Miata Club and Classic Mazda

Drive to each of the designated points in Texas.

Take a picture of you, your Miata, and the specified destination.

If both driver and co-pilot are participating, both can appear in the same picture or a picture of each person, your Miata, and the destination. Group pictures are also allowed as long the picture clearly shows all participants and all their cars.

Participants can choose to make any 10 of the designated destinations or all 12 destinations. Entries with 10 destinations will receive a specially designed Pin & T-shirt. Entries that include all 12 destinations will receive Pin & T-shirt, and will have their name entered into a drawing for special prizes. Drawing for prizes will be made at the annual 2017 Texas Miata Roundup.

Pictures can be submitted electronically or prints that are no larger than 4"x6" on photo quality paper. Those entries making all 12 must be submitted as prints on 4"x6" photo quality paper so that they may be displayed at the 2017 Texas Miata Roundup.

Mail or turn entries in to Bruce Gibson by October 01, 2017, see address below

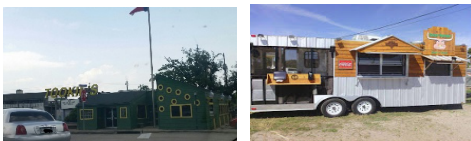
Awards will be given out at a Roundup or your club meeting.

- 
1. Butcher Shop, 102 Lehigh Street, Longview, TX 75601 (Bakery, Burgers, Breakfast)



2. Hwy 276 Burgers N Fries, 5360 TX-276, Royce City, 75189

3. Tookie's Burgers, 1202 Bayport Blvd, Seabrook, TX 77586 (Tookie's Cheeseburger)



4. Steerburger Grill & Pub, Rockport, TX 78382 (Honey Ham Burger)



5. Sissy's Saddle Shop Café, 2919 County Road 227, Cameron, TX 76520 (Southern, Pies)



6. Willow Creek Café, 106 Fort McKavitt Street, Mason, TX 76856 (Burgers, Pies)

7. Horny Toad Bar & Grill, 319 3<sup>rd</sup> Street, Cranfills Gap, TX 76637 (Toad Hamburger)



8. Perini Ranch Steakhouse, 3002 FM 89, Buffalo Gap, TX 79058 (Ranch Burger)

9. Willie's Place, 3135 10<sup>th</sup> Street, Wichita Falls, TX 76309 (Willy Burger)



10. The Crafterhouse Gastropub, 3131 34<sup>th</sup> Street, Lubbock, TX 79410 (Texas Burger)

11. Basin Burger House, 607 N. Colorado, Midland, TX 79701 (Green Chili Burger)



12. Rosco's Burger Inn, 3829 Tompkins Road, El Paso, TX 79930 (Basic Burger)



# 2017 Texas Miata Challenge



Name \_\_\_\_\_ Email \_\_\_\_\_

Address \_\_\_\_\_

City \_\_\_\_\_ Zip \_\_\_\_\_

Questions:

Bruce Gibson  
1020 Mesa Ct.  
Shady Shores, TX 76208  
Phone (940) 367-3572  
Email: brucegibson5@gmail.com

# Events & Items of Interest

## 2017 LSMC Monthly Meeting Schedule

**Fuddruckers – Grapevine**  
2001 TX-121  
Grapevine TX 76051  
(972) 724-0072

**Fuddruckers - McKinney**  
2025 N Central Expressway  
McKinney TX 75070  
(972) 548-8400

~~January 12 – Monthly Meeting~~

~~January 21, 2:00 – Planning Meeting~~  
~~February 9 – Monthly Meeting~~

~~March 9 – Monthly Meeting~~

~~April 13 – Monthly Meeting~~

May 11 - Monthly Meeting

June 8 - Monthly Meeting

July 13 - Monthly Meeting

August 10 - Monthly Meeting

September 14 - Monthly Meeting

October 12 - Monthly Meeting

November 9 - Monthly Meeting

December 14 - Monthly Meeting (if needed)

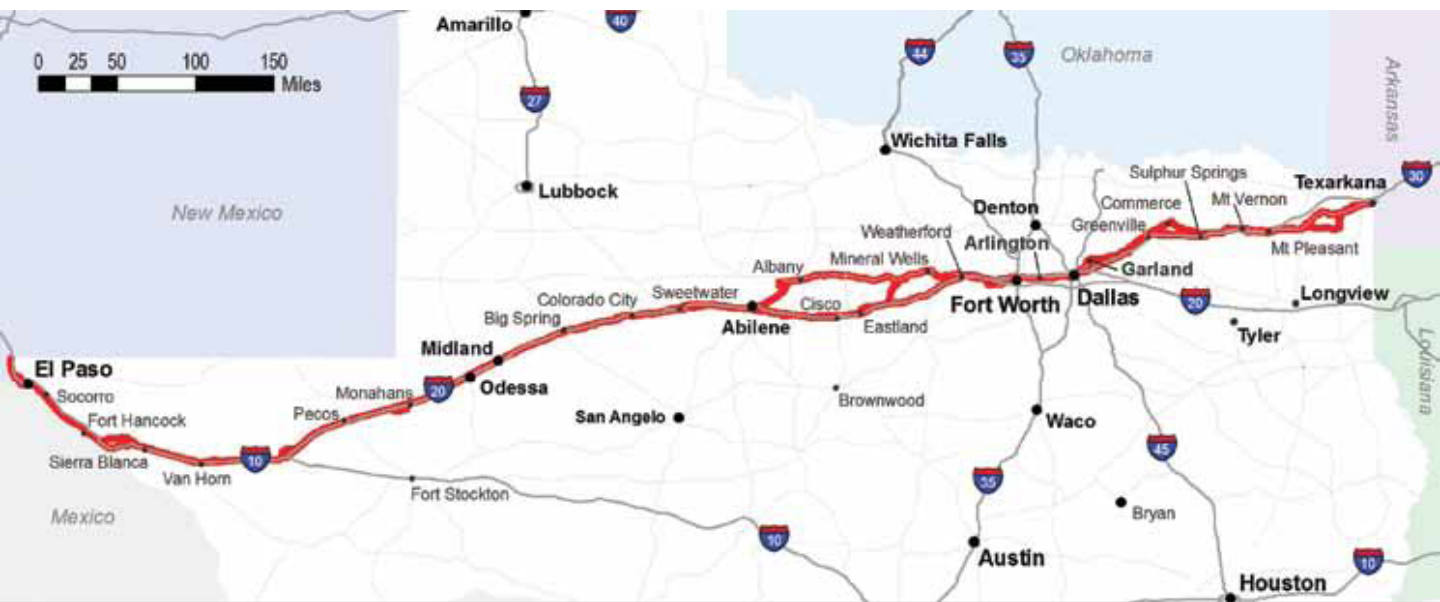
## A note about Evites...

Some people have asked me why they aren't getting Evites. Many years ago, it was decided to send one Evite per car/couple so as to reduce confusion in responses. The person responding can change the number of attendees to an event, but having one Evite eliminates the need for both people in a couple to respond. That being said, ALL members should be getting emails generated by the website, and all members can access the Evites from the website events listing and, in most cases, from Facebook. If you are not getting emails generated from the website, please see Doug Dodgen to verify your membership information.

Evites always contain the phone number of the person leading the drive/event. If you have questions or are running late, please contact that person.

I apologize for any confusion.





**HISTORIC TEXAS HIGHWAYS**

**BANKHEAD HIGHWAY**  
The Broadway of America



John Nagely is planning to lead us along part of the Bankhead Highway on April 29. Evite and more info to come.

The Bankhead Highway was one of the nation's earliest transcontinental highways. Its beginnings can be traced back to 1916 when the Bankhead Highway Association was organized to promote the highway's development. The road extended from Washington, D.C. to San Diego, California. Its path crossed approximately 850 miles of Texas, passing through Texarkana, Mount Vernon, Dallas, Fort Worth, Abilene, Midland, Van Horn and El Paso, roughly following today's US 67 and US 80.

You can read more at <http://www.thc.texas.gov/content/bankhead-highway>.



ANNUAL CLUB PICNIC

# KING OF THE GRILL

Lone Star Miata Club 940-367-3572  
Saturday, May 6 from 11:00 AM to 3:00 PM  
Parr Park Pavilion 3010 Parr Lane Grapevine, TX 76051

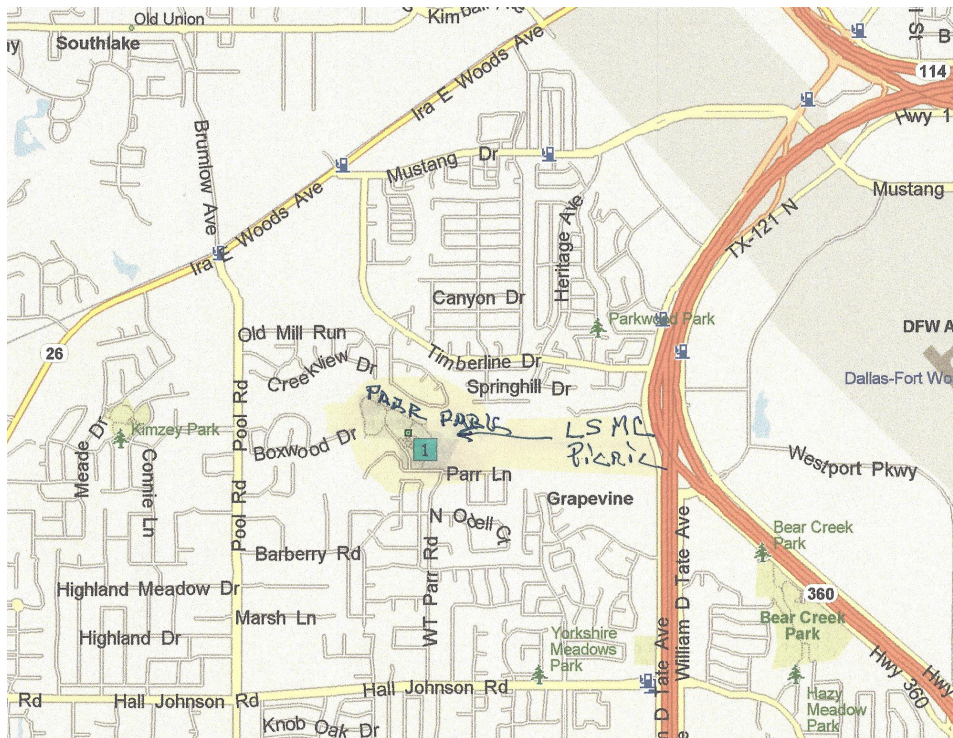


Join your Lone Star Miata Club at Parr Park Pavilion for the second annual club picnic. This is a MEMBERS ONLY event.

Barbecue to be provided. Bring a dish to pass. Electricity is available. Picnic tables are also in the pavilion. Bring your own drinks, lawn chairs, games, etc. Please accept the Evite if you plan to attend so we may get an accurate head count.

Attached is a map to Parr Park in Grapevine where the LSMC picnic will be held. Take Hall Johnson west off of William D. Tate Avenue. The turn right on WT Parr Road and follow it to the end where it meets Parr Park.

Bruce Gibson





**MAY** **Cars and Coffee Dallas**  
**6** Public · Hosted by Cars And Coffee Car Meet

Saturday, May 6 at 7 AM - 10 AM

[Cars And Coffee Car Meet](#)

Classic BMW - 6800 Dallas Parkway, Plano, Texas 75024

Join us on Saturday, May 6th for Cars and Coffee Dallas, the largest monthly gathering of amazing show cars in North Texas! This month's charity is Ride for Kids which supports the Pediatric Brain Tumor Foundation. Help support Ride for Kids by giving a donation when you get a free cup of coffee - or purchase a colorful Cars and Coffee t-shirt (proceeds go to Ride for Kids). Big Hal's food truck is also on site with great breakfast items.

Learn more about Ride for Kids:

[http://pbtf.convio.net/site/TR?fr\\_id=2805&pg=entry#.WPD31oWcE2w](http://pbtf.convio.net/site/TR?fr_id=2805&pg=entry#.WPD31oWcE2w)

TIP: Get there EARLY to see the largest amount of amazing cars!

<http://www.carsandcoffeedallas.com/>





Saturday, May 13, 2017

The weather is getting warm, and it is time to wash and shine our pretty Miatas and display them in a car show. We also want to clean up the engine so our cars will really look good. And bring some folding chairs so you can sit outside by your Miata.

Our Lone Star Miata Club is the visiting car club for the May 13 car show at the Cracker Barrel in Lewisville. The show is sponsored by the North Texas Mustang Club. Registration costs \$15 and is from 4 to 6 pm, with awards at 7:30 pm. That gives us plenty of time to have dinner at the Cracker Barrel. Show participants do the judging, and awards are given to the first and second place winners in each class. Each car is eligible to enter in one of five classes (of the 19 classes total). And if your Miata is "under construction", there is even a class for that.

**DETAILS:**

Date: Saturday, May 13, 2017

Time: Registration begins at 4 pm. Plan on arriving by 4 pm so we can be sure to park together.

Awards: About 7:30 pm

Entry Fee: \$15.00

Location: Cracker Barrel in Lewisville at Hwy 35 and the Fox Avenue exit.

889 South Stemmons Freeway

Lewisville, TX 75067

Thanks

Richard Rogers

[Rprogers5@aol.com](mailto:Rprogers5@aol.com)

972-272-3969



## MEMORIAL DAY WEEKEND AT THE COAST

Lone Star Miata Club 817-789-2965

Saturday, May 27 at 9:00 AM to Monday, May 29 at 6:00 PM

Baymont Inn & Suites Seabrook Kemah 2901 East Nasa Parkway Seabrook, TX 77586

Join us for a fun-packed Memorial Day weekend on the Gulf Coast.

We have a block of 14 rooms for May 26, 27, 28 at Baymont Inn and Suites, 2901 East Nasa Parkway, Seabrook TX 77586, 281-326-3301. The rate is \$107.10 for 1st two nights (Friday & Saturday) and \$80.10 Sunday night. Reservations have to be made by May 5th to secure the room. When making reservations the room block is listed as Lone Star Miata Club.

We'll start the drive down Friday evening, May 26th (with a group or on your own) and head back Monday afternoon, May 29th. You can join us for all events or choose specific events you want to be part of.

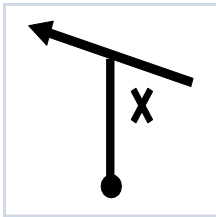
On Saturday, we'll start out at Nasa Space Center, a late lunch at the Texas Challenge Site in Seabrook, and then on to Kemah where you can enjoy a spectacular Boardwalk, unique gift shops, amusement park, and waterfront restaurants. There might be an afternoon ride on the fastboat, The Beast, for a 45 minute tour of Galveston Bay.

Sunday we'll head to Galveston Island. We'll drive along Seawall Blvd and down Galveston Island. On the way back we'll stop at Seawolf Park, Bishop's Palace, The Strand in Galveston, and possibly more.

Monday will include a visit to the San Jacinto Monument and Battleship Texas before heading back home.

If we have enough people interested we might be able to get a group discount for Nasa Space Center.

Betty Banfield  
betty.banfield@gmail.com



## TULIP TIME RALLY



The image above left is a kind of rally instruction called a tulip. This one means “Turn left at slant T at STOP”. The X represents the stop sign. These were first used by the famous Tulip Rally in Holland. We will use this type of route instruction for this event

The main challenge for this event will be to find certain signs along the route, and to answer questions suggested by the signs. The clues given to tell you which signs we want (or the questions) may be a little obscure, but you will soon catch on.

- Start location: Mazda of Mesquite dealership, at 15900 LBJ Frwy, Mesquite, TX 75150, at Oates Dr.
- Finish location: Spring Creek Barbeque, 1993 North Central Expy, McKinney, 75070, at US-380.
- Rally registration begins at 9:00am on Saturday, May 27. The Safety Briefing will be at 10:00am.
- Car #1 will receive their Route Book and score sheets at 10:21am. First car will be out at 10:31am.
- Cars are expected in McKinney around 2:30pm. This figure may change.
- You will take the scenic route to McKinney, on country roads around Lake Ray Hubbard, mostly.
- Any vehicle with 4 wheels that’s street legal is welcome: sports cars, family sedans, pickup trucks, etc. All roads are paved.
- At least two people old enough to read must be in the car. Additional passengers are allowed.
- Rally Fee: \$25.00 per car. SCCA members get a \$5 discount. There will be a \$5 late fee if not preregistered at <http://msreg.com/TTR17msr> .
- Awards for First Timers, Novices (less than 3 rally trophies won), and General Class cars.
- There is also a Master class for those who don’t want any more trophies. This class is optional.
- If a minor child (<18) will be in the car, contact [rally@texascca.org](mailto:rally@texascca.org) for a Minor Waiver form for a parent to sign.
- If you have any rally questions, send them to [rally@texascca.org](mailto:rally@texascca.org) .

The General Instructions for the event will be emailed to those who preregister, a few days before the rally.

**Join us!**

This rally is sanctioned as a Divisional Rally by SCCA, and is a part of the National SCCA Road Rally Championship. Sanction Number: 2017-DG-41-02. Texas Region SCCA ([www.texascca.org](http://www.texascca.org)) is affiliated with the Sports Car Club of America ([www.scca.org](http://www.scca.org)). With over 65,000 members, and with Regions all over the US, the club offers car related activities in a broad range of automotive events.

**This is the second event in the 2017 Texas Region SCCA Championship Road Rally Series.**





# Ancient Ovens



## Wood-Fired Pizza and Artisan Breads



"An Old World Culinary Experience"  
@ BlueDog Vista Ranch  
857 Childress Road  
Saint Jo, Texas  
940 366-4255



### 7<sup>th</sup> annual fun run to Ancient Ovens on June 10, 2017

Please note the payment method this year. Click on the payment link and put in the amount you are paying. Dinner is just \$24 per person. NO REFUNDS, so if someone buys in and then can't make it, I'll do my best to find a replacement. The club reservation is for 30 people, and 27 slots are still available after we paid. First come, first serve! When the invoice is paid in full, no more slots are available.

Ancient Ovens serves a 4-course dinner buffet style. It's BYOB – so bring your ice chest with ice and adult beverage of choice. Iced tea and water is provided. Check out their web site at [www.ancientovens.com](http://www.ancientovens.com).

Details of the drive will be worked out later, but we should plan to meet in the Roanoke area around 4 pm.

Any questions or comments , just send them my way!

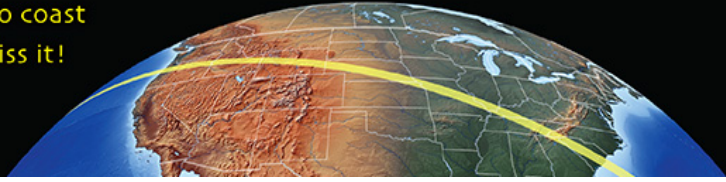
Gerry and Suzanne Sauls  
[gesauls@gmail.com](mailto:gesauls@gmail.com)  
817-680-8922

[https://www.paypal.com/invoice/payerView/details/INV2-5U4P-U6FA-EZUB-XWYK?ppid=PPC000977&cnac=US&rsta=en\\_US\(en\\_US\)&cust=&unptid=2b7c8010-1fba-11e7-82f9-d485645488f0&t=&cal=f009ddd7d7ecf&calc=f009ddd7d7ecf&cal=f009ddd7d7ecf&unp\\_tpcid=invoice-buyer-notification&page=main:email&pgrp=main:email&e=op&mchn=em&s=ci&mail=sys](https://www.paypal.com/invoice/payerView/details/INV2-5U4P-U6FA-EZUB-XWYK?ppid=PPC000977&cnac=US&rsta=en_US(en_US)&cust=&unptid=2b7c8010-1fba-11e7-82f9-d485645488f0&t=&cal=f009ddd7d7ecf&calc=f009ddd7d7ecf&cal=f009ddd7d7ecf&unp_tpcid=invoice-buyer-notification&page=main:email&pgrp=main:email&e=op&mchn=em&s=ci&mail=sys)



A total solar eclipse from coast to coast  
The sight of a lifetime, don't miss it!

August 21, 2017



## NEW HOTEL INFORMATION AS OF FEB. 9

Here is the initial itinerary "sketch" for the Great American Eclipse trip

- Saturday, Aug. 19: drive from Dallas to Fayetteville, AR
- Sunday, Aug. 20: drive from Fayetteville, AR, to Cape Girardeau, MO
- Monday, Aug. 21: at leisure in the morning watch eclipse at 1:00 (ish) local time.  
drive from Cape Girardeau, MO, to Little Rock, AR
- Tuesday, Aug. 22: drive from Little Rock, AR, to Dallas

Departure point and further hotel information will be forthcoming.

Saturday, Aug. 19 hotel:

Staybridge Suites Bentonville-Rogers, \$89 studio queen, \$99 king  
1801 South 52<sup>nd</sup> St, Rogers AR 72758  
479-845-5701, reference Lone Star Miata Club block

Sunday, Aug. 20 hotel:

Auburn Place Cape Girardeau, \$109  
3265 William Street, Cape Girardeau, MO 63701  
573-651-4486, reference Miata Group Eclipse run

Here's a link to a web site with information about the eclipse itself

<http://www.greatamericaneclipse.com/eclipse-2017/>

Brian Knopp

# Russellville Roadsters Rally

I have set a new date for next year for our rally, which is going to be the weekend of Oct. 27-29, 2017 in Russellville, AR.

Once again I will reserve a block of rooms at LaQuinta. The phone number for the hotel is 479-967-2299. In order to get the reduced rate, reference Miata rally.

The big drive will be Saturday, Oct. 28, and will encompass the Arkansas dragons tail and some of our most challenging roads in northern Arkansas. For those of you not familiar with our beautiful location here in Russellville, there will be a short drive on Friday, Oct. 27, to Mount Nebo State Park on top of beautiful Mount Nebo, which is nothing but switchbacks to get to the top.

Registration will be all day on Friday, and we will have a catered get together Friday night in the event room at the hotel.

I will get a flyer out sometime in the spring and have cost of the rally at that time.

Hope everyone can put this on your calendar and join us next year. Any questions please give me a call.

Christina Roulston

Cell: 479-280-0438

# Don't forget the LSMC website

<http://www.internetcarclubs.com/Clubs/LoneStarMiataClub.aspx>

Doug Dodgen has been working on the website to make it the best place to check information about the club. He has added the yearly calendar so you can plan for upcoming rides. Keep in mind that dates are subject to change. Members can log in and modify their contact information as well as add a profile picture. You will no longer get a PDF directory of members. If you have questions about editing your information, please contact Doug. The main page of the Lone Star Miata Club part of the website contains a link to our [www.LSMiata.org](http://www.LSMiata.org) Wordpress site where links to newsletters and events will continue to be published.

Check us out at <http://www.internetcarclubs.com/Clubs/LoneStarMiataClub.aspx>!

If you have not renewed your membership for 2016, please do so ASAP. You will be removed from the club roster and from Evites after March 30. Remember the new dues structure is \$39 for couples who both want to join, and \$30 for singles. Your dues go toward doorprizes, club insurance, and supplementing costs for annual events such as the Christmas party and picnic.

---

## *From your editor*

Don't forget the photo sharing site at <http://lonestarmiataclub.shutterfly.com/>. You have to create a free Shutterfly account to gain access. I know many of you (including me) already had a Shutterfly account, so it should be an easy way for us to share photos of events and "stuff." We also share photos on Facebook, so join us at the Lone Star Miata group.

When you lead a drive, please download and print participant waivers from <http://lsmiata.org/events/>. There is a track waiver and a street/rally waiver, so print the right one. It's a good idea to have maps with your phone number printed on them for a trip. Also be sure to bookmark the home page <http://lsmiata.org> and the new website at <http://www.internetcarclubs.com/Clubs/LoneStarMiataClub.aspx> to get all the latest information about us.

Doug has cards to leave on Miatae we see out and about. This is a great way to invite them to the club. Pick your cards up at the next meeting.

I have included all the upcoming events I know about. If you have anything you would like to see in the newsletter please let me know. Please feel free to contact me at [newsletter@LSMiata.org](mailto:newsletter@LSMiata.org).

# Classifieds:



## FOR SALE!

***DON'T FORGET TO SEE OUR VICE PRESIDENT, RICHARD ROGERS, FOR ALL CLUB LOGO ITEMS!***

*Items are excellent quality and only require a very reasonable donation.*

*Richard orders the magnets in batches. They are great to show off when we drive as a group. Magnets are \$15 for a set of 2. If you don't want to wait for the next batch, be sure to purchase them when he has them on hand.*

*Pins are still \$2 each or 10 for \$15. Great for trading with other groups!*



*Richard can also order coffee mugs and T-shirts with the club logo. The logo can be positioned anywhere on the shirt, in small or large size.*

*Mugs are available for about \$12, and shirts are available for around \$10-15. Contact Richard for details.*







# RYAN JUSTICE

MAZDA • MESQUITE

We welcome you to Ryan Justice Mazda of Mesquite, where you can experience the passion of personalized customer service. With a deep heritage in Mazda racing, our team brings their knowledge and technical expertise of the Mazda brand to ensure your vehicle receives the best maintenance and care available.

We've built a winning team around our racing culture that is focused on providing a superior experience to each and every customer through integrity, accountability, and a passionate commitment to excellence.

We're a family owned and operated dealership, where we take care of our customers both on and off the lot, and before and after the purchase.

We look forward to seeing you at Mazda of Mesquite to meet our owners and staff, and to experience our passion for the Mazda brand.



## Free complimentary synthetic oil change on your first visit

With Club Membership ID. Plus tax and shop supplies. Valid at Mazda of Mesquite only. Does not apply to prior purchases. Must present coupon when service is written. Not valid with any other offers. Excludes diesels. Expires 04/30/17.

## Service or Parts Club special

# 10% OFF



With Club Membership ID. Valid at Mazda of Mesquite only. Does not apply to prior purchases. Please present coupon ordering. Not valid with any other offers. Expires 04/30/17.



## LSMC Logo Stuff

Contact our Vice President, Richard Rogers at [VP@lsmiata.org](mailto:VP@lsmiata.org) for LSMC Logo merchandise being offered through the club. You also can buy merchandise at Panda Embroidery, 351 East Huggins, Grapevine, TX 76051 (817-488-4151). Panda can embroider items in a thread color of your choice including one that matches your Miata!

## Newsletter Submissions & Distribution

Ads, announcements, articles, trip reports and other contributions to the newsletter are *encouraged*. Email submissions to [Newsletter@lsmiata.org](mailto:Newsletter@lsmiata.org). Attachments may be in .pdf, .txt, Word or WordPerfect format. Pictures may be in any of the usual formats such as .gif, .jpg, png, etc. If I have any problems with document or picture format, I will contact you. Don't worry about spelling, grammar, artwork, layout, etc. I'm just pleased to receive input and will take care of the editing and cosmetics! Also, if you find something interesting online, please send me the link. Input is welcome anytime, but must be received prior to the publishing deadline (usually the first of the month) to be in the next issue.

NOTE: If you want the newsletter sent to more than one email address, your secondary driver, or anyone else, please send your name (so I know you're a member) and the email address(es) to [Newsletter@lsmiata.org](mailto:Newsletter@lsmiata.org).

ANOTHER NOTE: Member in Good Standing (you've paid your dues) may submit ad copy or info on their business. Does *not* have to be a Miata- or car-related business, but it must be *your* business. Others may advertise, too, for a fee. Contact the [President@lsmiata.org](mailto:President@lsmiata.org) for details.

## Two-Way Radios

For more fun on drives, if you don't have a two-way radio, get one. Without one, you miss out on a lot of chat and decision making as to stops, etc. Most importantly, should you get separated from the group or have car trouble; it makes it much easier for us to find you and assist you! LSMC uses GMRS/FRS radios for better range and reception. An operating license is not required when used in the FRS range.

## Stuff for Sale and Announcements

LSMC permits all members in good standing to place a free ad or event announcement in the LSMC Newsletter. The item should relate to the Miata or Club activities. This includes activities hosted by other clubs, Car-related events of general interest are also welcome. Contact the editor at [Newsletter@lsmiata.org](mailto:Newsletter@lsmiata.org) to place an ad or announcement.

## Change of Address & Member Info

Be sure to keep your contact information and particularly your email address up-to-date; you don't want to miss anything! Submit your email address, snail mail address, new car info and any other contact information changes to the Membership Officer at [Membership@lsmiata.org](mailto:Membership@lsmiata.org). A form also is available on our website. Just click 'Membership' and select the text 'update' to update your information.

## Blogsite and Facebook

Check out our **blogsite** at [lsmiata.org](http://lsmiata.org) for various information. For up-to-the-minute events information, member input and other stuff, visit our **Facebook** page at [Lone Star Miata Group](https://www.facebook.com/LoneStarMiataGroup). You may also consult the newsletter, which is published more or less monthly.

# LONE STAR MIATA CLUB

## MEMBERSHIP RENEWAL FORM

Time to renew your membership! Annual dues are \$30 for singles, \$39 for couples. After March 31, 2017, add \$5 late fee. If your dues have not been paid by the April meeting, your name and number will be dropped from the membership roll. Make checks payable to **Lone Star Miata Club**. Please **complete** this form, **even if no information has changed**, and return it along with your check to:

**Doug Dodgen**  
**Lone Star Miata Club**

508 Chaffee Drive  
Arlington TX 76006

Please provide the following information. To avoid errors, **please print legibly.**

**PRIMARY DRIVER:** \_\_\_\_\_ Birth Date \_\_\_\_ / \_\_\_\_

**SECONDARY DRIVER:** \_\_\_\_\_ Birth Date \_\_\_\_ / \_\_\_\_

**ADDRESS:** \_\_\_\_\_

(apt #, number, street) \_\_\_\_\_

(city) (ST) (zip)

Landline: (\_\_\_\_) \_\_\_\_\_ Driver Cell: (\_\_\_\_) \_\_\_\_\_

Driver email:

\_\_\_\_\_

Copilot email:

\_\_\_\_\_

Club notices and correspondence will be sent to all email addresses listed.

*(Please advise if you have not been receiving the Newsletter and/or emails.)*

YOUR MIATA'S NAME (if it has one): \_\_\_\_\_

COLOR: \_\_\_\_\_ YEAR: \_\_\_\_\_

ADDITIONAL MIATAS: \_\_\_\_\_

(Color) (Year) (Name)

Please list additional cars and any additional information on the back of this form.

**THANK YOU! ~ Your Membership Officer**

----- **below for club use only** -----

DATE	AMOUNT	CHECK	CHK. TO	D-BASE
RENEWED	PAID	NUMBER	TREAS.	UPDATED

\_\_\_\_\_

**LONE STAR MIATA CLUB**

**NEW MEMBER FORM**

Please provide the following information. To avoid errors, *please print legibly.*

**PRIMARY DRIVER:** \_\_\_\_\_ Birth Date \_\_\_\_ / \_\_\_\_

**SECONDARY DRIVER:** \_\_\_\_\_ Birth Date \_\_\_\_ / \_\_\_\_

**ADDRESS:** \_\_\_\_\_  
(apt #, number, street)

\_\_\_\_\_  
(city) (ST) (zip)

HOME: (\_\_\_\_) \_\_\_\_\_ WORK: (\_\_\_\_) \_\_\_\_\_ CELL: (\_\_\_\_) \_\_\_\_\_

EMAIL ADDRESS #1: \_\_\_\_\_

EMAIL ADDRESS #2: \_\_\_\_\_

Club notices and correspondence will be sent to all email addresses listed.

YOUR MIATA'S NAME (if it has one): \_\_\_\_\_

COLOR: \_\_\_\_\_ YEAR: \_\_\_\_\_

ADDITIONAL MIATAS: \_\_\_\_\_

(Color) (Year) (Name)

Please list additional cars and any other information on the back of this form.

Did a member of this club tell you about our club and if so, who? \_\_\_\_\_

Annual membership fee is \$39 per year for couples, \$30 for singles . If you want to purchase a club nametag, add \$10 per nametag (price is higher if purchased later). Dues for members joining after June 30<sup>th</sup> are prorated. Please make checks payable to: Lone Star Miata Club

Return this form and your check to:

**Doug Dodgen**  
**Lone Star Miata Club**  
508 Chaffee Drive  
Arlington TX 76006

For more information, please contact:  
Doug Dodgen  
Membership Chairman  
817-475-7004  
[Membership@lsmiata.org](mailto:Membership@lsmiata.org)

----- *below for club use only* -----

DATE	AMOUNT	CHECK	CHK. TO	D-BASE
RENEWED	PAID	NUMBER	TREAS.	UPDATED
_____	_____	_____	_____	_____